

YAMATO COURT MUPD

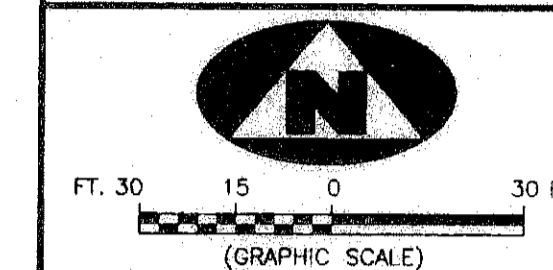
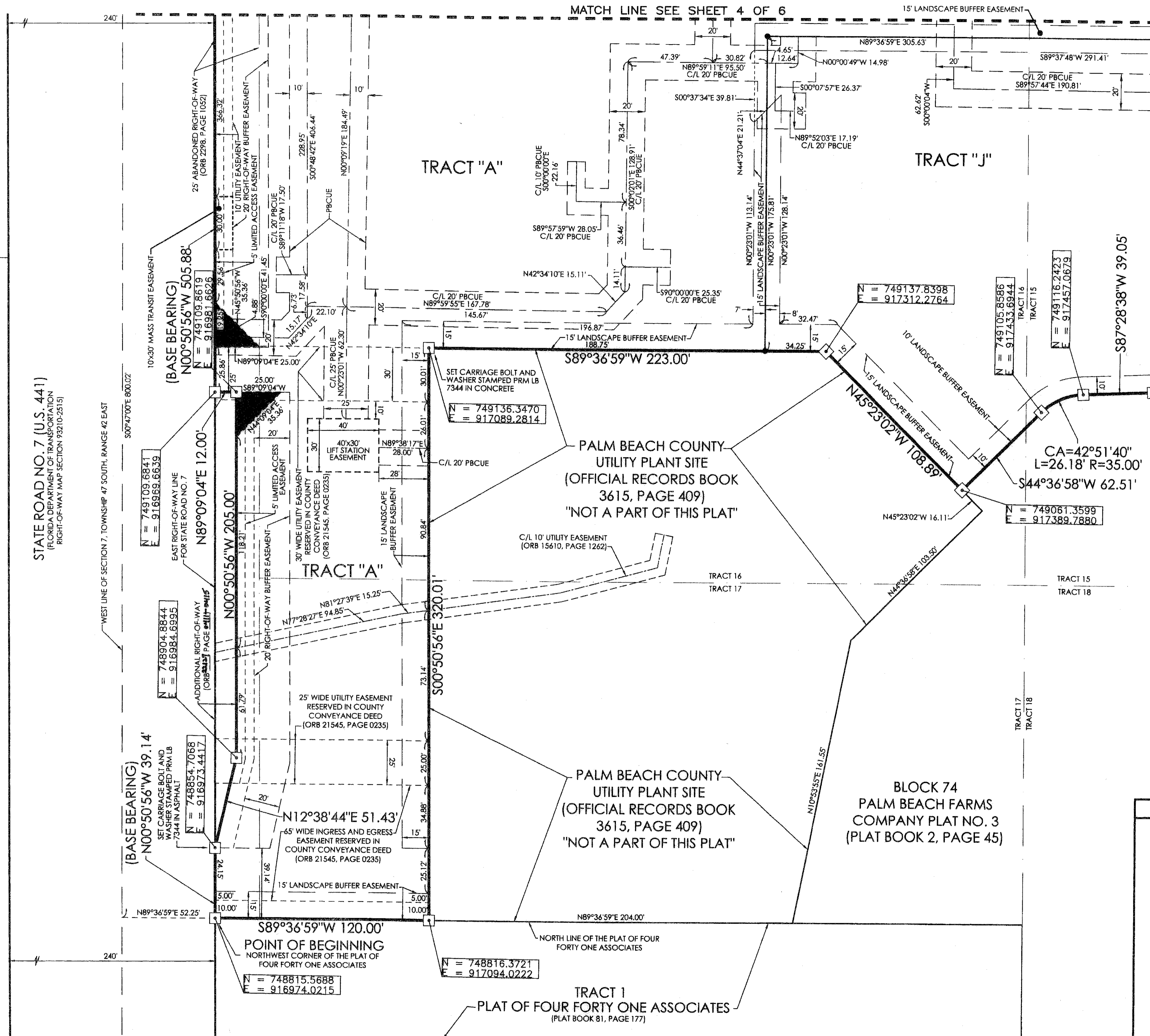
BEING A PORTION OF TRACTS 14, 15, 16, 17, 18 AND 19, BLOCK 74, AND A PORTION OF THE ABANDONED 25.00 FOOT PALM BEACH FARMS COMPANY PLAT NO. 3 RIGHT-OF-WAY LYING WESTERLY OF, AND CONTIGUOUS TO, SAID TRACTS 16 AND 17, ALL IN PALM BEACH FARMS COMPANY PLAT NO. 3, RECORDED IN PLAT BOOK 2, PAGE 45, PUBLIC RECORDS, PALM BEACH COUNTY, FLORIDA AND LYING IN SECTION 7, TOWNSHIP 47 SOUTH, RANGE 42 EAST, PALM BEACH COUNTY, FLORIDA

163

FLORIDA FRUIT LANDS
COMANY'S SUBDIVISION NO.2
(PLAT BOOK 1, PAGE 102)

BOCA GREENS GOLF COURSE
(PLAT BOOK 51, PAGE 175)

STATE ROAD NO. 7 (U.S. 441)
FLORIDA DEPARTMENT OF TRANSPORTATION
RIGHT-OF-WAY MAP SECTION 93210-2515

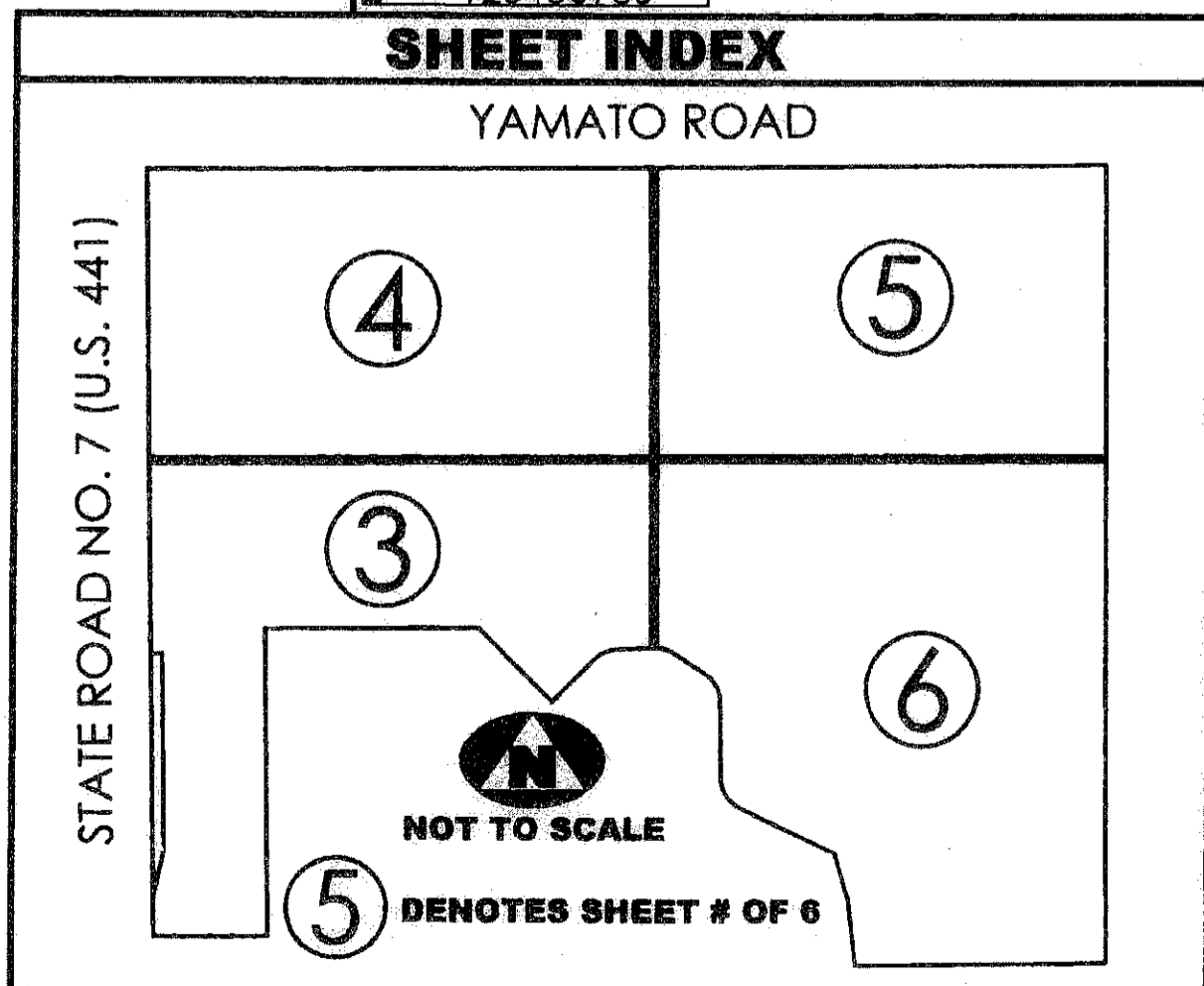


DATE	REVISION
1-30-2007	ADDRESSED FIRST COMMENTS LETTER
2-27-2007	REVISE COUNTY EASEMENT LANGUAGE
5-22-2007	ADDRESSED SECOND COMMENTS LETTER
5-22-2007	REVISED PBCUE

COORDINATE NOTES AND LEGEND

- THE COORDINATES SHOWN HEREON ARE STATE PLANE GRID COORDINATES ACCORDING TO THE TRANSVERSE MERCATOR PROJECTION OF THE FLORIDA EAST ZONE, N.A.D. 1983, PER THE 1990 ADJUSTMENT.
- THE GROUND DISTANCE TO GRID DISTANCE SCALE FACTOR IS 1.000019 (GROUND DISTANCE X SCALE FACTOR = GRID DISTANCE)
- THE LINEAR DIMENSIONS SHOWN HEREON ARE GROUND DISTANCES IN U.S. FEET AND DECIMAL PARTS THEREOF.

N = 123456789 DENOTES A NORTHING AND EASTING COORDINATE
E = 123456789



LEGEND	
(R)	DENOTES A RADIAL LINE
C/L	DENOTES A CENTERLINE
DE	DENOTES DRAINAGE EASEMENT
UE	DENOTES UTILITY EASEMENT
LS	DENOTES LIFT STATION EASEMENT
EAE	DENOTES EMERGENCY ACCESS EASEMENT
R	DENOTES RADIUS DISTANCE
L	DENOTES ARC LENGTH DISTANCE
CA	DENOTES CENTRAL ANGLE
LCB	DENOTES LONG CHORD BEARING
CHD	DENOTES CHORD DISTANCE
ORB	DENOTES OFFICIAL RECORDS BOOK
LWDD	DENOTES LAKE WORTH DRAINAGE DISTRICT
□	DENOTES A SET PERMANENT REFERENCE MONUMENT (L.B. 7344)
⊙	DENOTES A SET CARRIAGE BOLT AND WASHER STAMPED PRM (L.B. 7344)
●	DENOTES A CORNER NOT SET/FOUND
PBCUE	DENOTES PALM BEACH COUNTY UTILITY EASEMENT

SURVEYOR'S NOTES

- THE BEARING BASE (BASE BEARING), AS SHOWN HEREON IS BASED ON THE STATE PLANE GRID AZIMUTH BEARING OF NORTH 00°50'58" WEST, ALONG THE EAST RIGHT-OF-WAY LINE OF STATE ROAD NO. 7, AS SHOWN HEREON, AND ALL OTHER BEARINGS ARE RELATIVE THERETO
- IN THOSE INSTANCES WHERE UTILITY OR DRAINAGE STRUCTURES ARE CONSTRUCTED IN CONFLICT WITH THE PLATTED PERMANENT CONTROL POINT POSITION STRADDLERS MONUMENTED AS PERMANENT CONTROL POINTS WILL BE SET TO REFERENCE THE PLATTED POSITION.
- POINTS THAT INTERSECT CURVES ARE NOT RADIAL UNLESS OTHERWISE NOTED.
- THIS INSTRUMENT WAS PREPARED BY WM. R. VAN CAMPEN, P.S.M. NO. 2424, IN AND FOR THE OFFICES OF BENCH MARK LAND SURVEYING & MAPPING, INC., 4152 WEST BLUE HERON BOULEVARD, SUITE 121, RIVIERA BEACH, FLORIDA 33407

FILE: P295-PLAT	
FB:	WO.NO.: P295
SCALE: 1"=30'	DATE: 10/10/2006
DWN: KVC	SHEET 3 OF 6

ASSOCIATED LAND SURVEYORS, INC.
4152 W. BLUE HERON BOULEVARD-SUITE 121
RIVIERA BEACH FLORIDA 33404
PHONE: (561) 848-2102 FAX: (561) 844-9659 EMAIL: ALSURVEY@aol.com